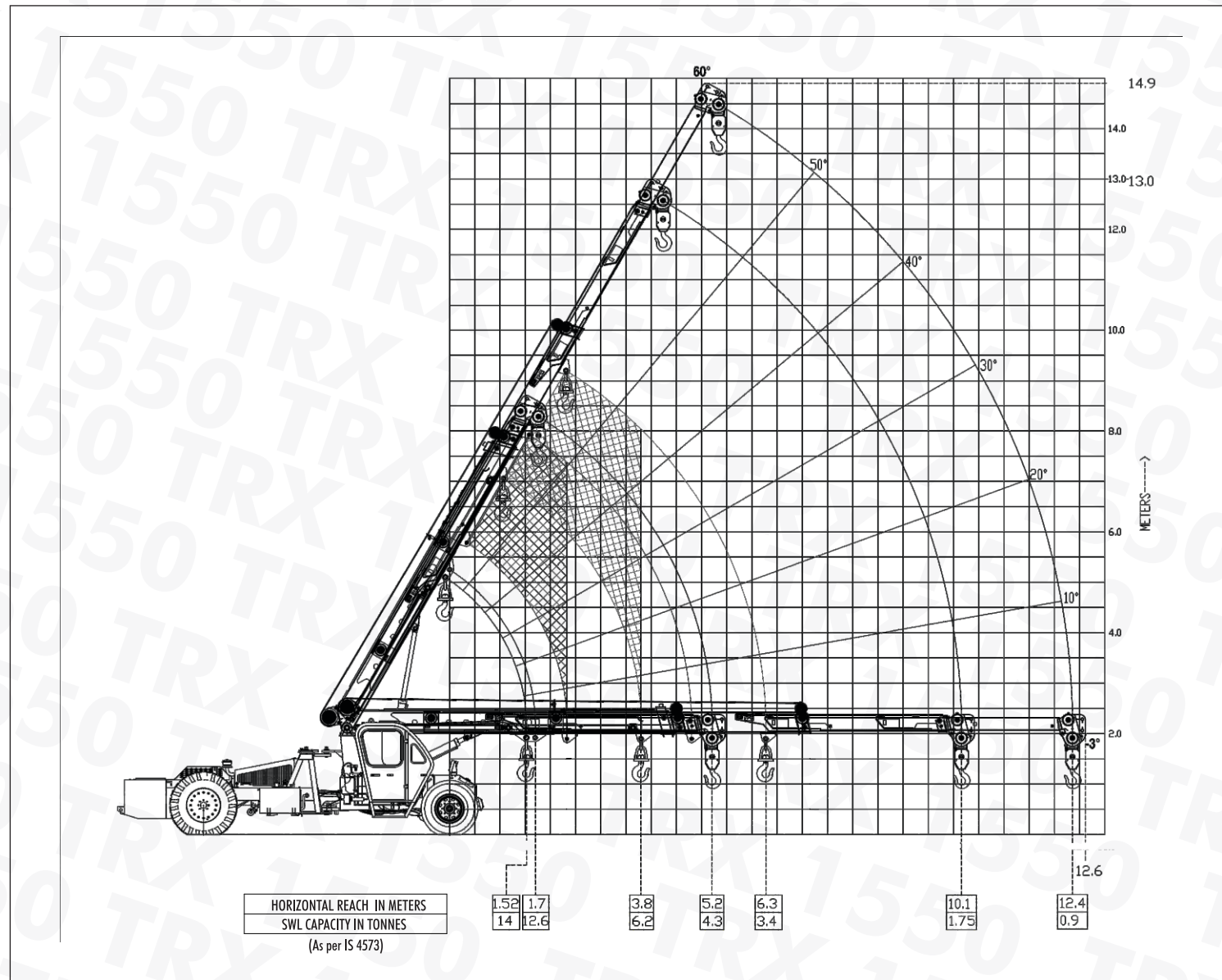


TRX 1550

Load Chart

TRX 1550



The information contained in this leaflet is intended to be of general nature only. We reserve the right to change the specifications without any prior notice. All dimensions and weights are variable with in ±2.5%.

New Generation Crane

- 14T Capacity Crane with 50ft boom
- Front mounted cabin for better Visibility
- Chassis type design and optimized geometry for enhanced stability and control
- Low Creep Speed of 2km/hr for better handling of loads



SAFE • STRONG • STURDY



Escorts Construction Equipment Limited Plot No. 219, Sector 58, Ballabgarh-121 004, Haryana, India
Tel.: +91 129 2306566, Fax: +91 129 2306463 | e-mail: marketing@escorts-ecel.com | www.ecel.com

Customer Support (Toll free) : 1800-180-1890

LIT / MKTG / TRX 1550 / 05-12

TRX 1550

Specifications

RATED CAPACITY

(as per IS 4573) ▶ 14 T @ 1.52 m radius
0.9T @ 12.4 m radius

ENGINE

Make & Model ▶ Escorts E4.286 NA Four Cylinder, Water Cooled Diesel Engine 51 PS @ 2200 RPM or equivalent

TRANSMISSION

Drive Type ▶ 2 Wheel Drive
Heavy Duty, Constant Mesh, Helical Teeth Gearbox coupled with straight drive axle

Speeds ▶ 8 Forward & 2 Reverse speeds with High / Low Selector

Creep Speed ▶ 2 km/hr under laden condition, ideal for crane operation (with load)

Clutch ▶ Single Plate, Heavy Duty type

STEERING

Type ▶ Power Steering, Articulated, hydraulically controlled, actuated by Steering Wheel.

Articulation ▶ 45° on either side

BRAKES

Front Wheel ▶ Full Pneumatically assisted hydraulic brake.

Rear Wheel ▶ Disc brakes actuated Through a slave cylinder

Parking ▶ Hand operated Mechanically actuated at rear wheels

TYRES

Front ▶ 11.00 X 20 - 16PR (4 nos.), inflation pressure 110-115 PSI

Rear ▶ 14.00 X 24 - 16PR (2 nos.), inflation pressure 58 PSI.
Water Ballasted

BOOM

Luffing Angle ▶ From -3° to 60°

Telescoping ▶ 4 part, hydraulically powered & fully synchronized.

Type ▶ Slotted Boom with Rope compensation.

Derricking ▶ Through double acting jacks.

HOIST MECHANISM

Hoist ▶ Hydraulic winch. Four falls (Winch capacity 12T)
Rope dia 13 mm

HYDRAULIC SYSTEM

Pump ▶ Vane type hydraulic pump.

Control Valve ▶ 4 spool control valve with built in pressure relief valve and precision control.

Hydraulic Filter ▶ Suction line has a 100 mesh inline strainer while return line has 25 microns full flow filter.

ELECTRICAL SYSTEM

Type ▶ 12V Single battery, Negative earth.

CAPACITIES

Fuel Tank ▶ 90 Ltrs.

Hydraulic Tank ▶ 90 Ltrs.

OPERATING WEIGHT(Kg)

Gross Vehicle Weight ▶ 13400 Kg

OVERALL DIMENSIONS

Length ▶ 11900 mm

Width ▶ 2550 mm

Height ▶ 2780mm

SAFETY SYSTEM

▶ Overload Audio warning System.

▶ Rope Compensation for auto levelling.

▶ Safety brakes on hoist.

▶ Hose protection failure device.

▶ Front Mounted Cabin.

STANDARD ACCESSORIES

▶ All weather cabin

▶ Steering Wheel

▶ Front Bumper

▶ Reflectors

▶ Rear View Mirror

OPTIONAL ACCESSORIES

▶ Fly Jib

▶ Air Conditioned Cabin

▶ Safe Load Indicator with hydraulic cut off

▶ Rear View Camera with LCD Display

▶ Tyre Guard

▶ Over Hoist and over load cut off

▶ Tilt Indication Indinometers

TRX 1550

Features



Stable Crane

The center of gravity is low and falls within the dimensions even under articulation.



Front Mounted Cabin

Front cabin for better visibility & control of loads. Line of sight is always aligned with load even in articulation.



Slotted Boom

Slotted Boom with Rope Compensation for auto levelling of load and precision handling.



Creep Speed

Low Travel speed with load of 2 km/hr achieved through a combination of constant mesh Transmission and straight drive axle



Steering Wheel

Articulated power steering controlled through steering wheel for safe usage and precision control



Rear View Camera

Rear view Camera with LCD display in cabin, ensures complete rear view increasing safety



SLI

Safe Load indicator with features like 1 hook/ 3 hooks calibrations & fail safe operations with cut off.



Visibility

Operator's visibility is optimum from the cabin for better controls.

SAFE • STRONG • STURDY

SAFE • STRONG • STURDY