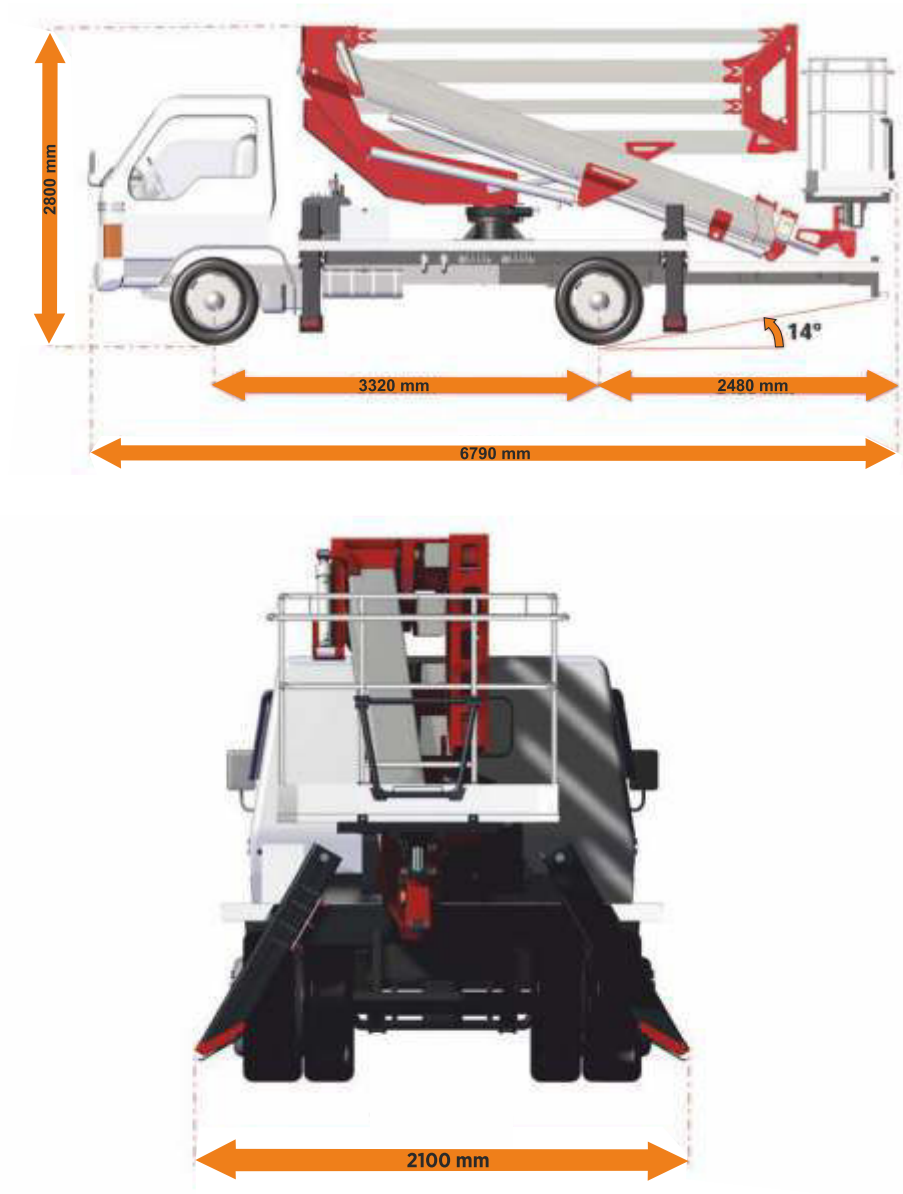


Technical Diagram



GENERAL SPECIFICATION

Maximum working height	23.8 m
Maximum basket floor height	21.8 m
Maximum horizontal outreach	10.7 m

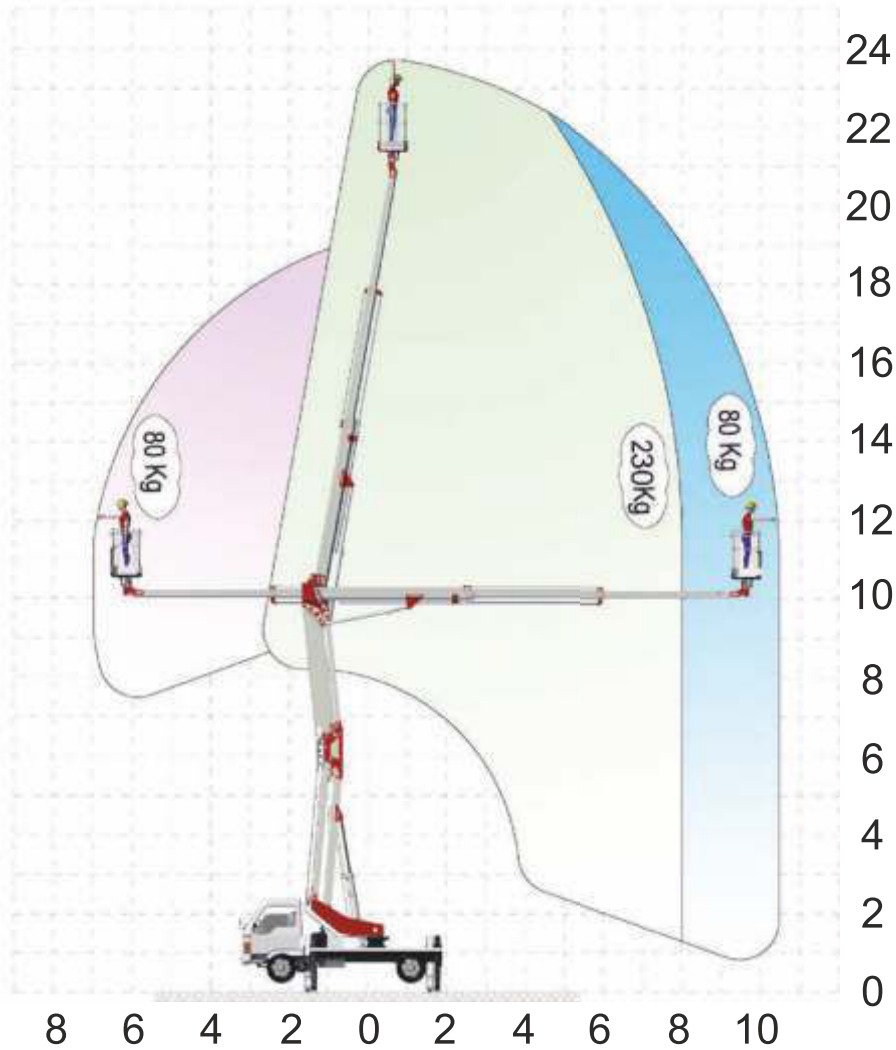
BASKET SPECIFICATION

Basket dimensions	700X1100X1400mm
Maximum permissible load	230 KG
Slewing range of basket	2X90°
Engine start/stop in the basket	STANDARD
220V AC outlet	STANDARD
Overload control on basket	STANDARD
Lightening	STANDARD

SLEWING SYSTEM

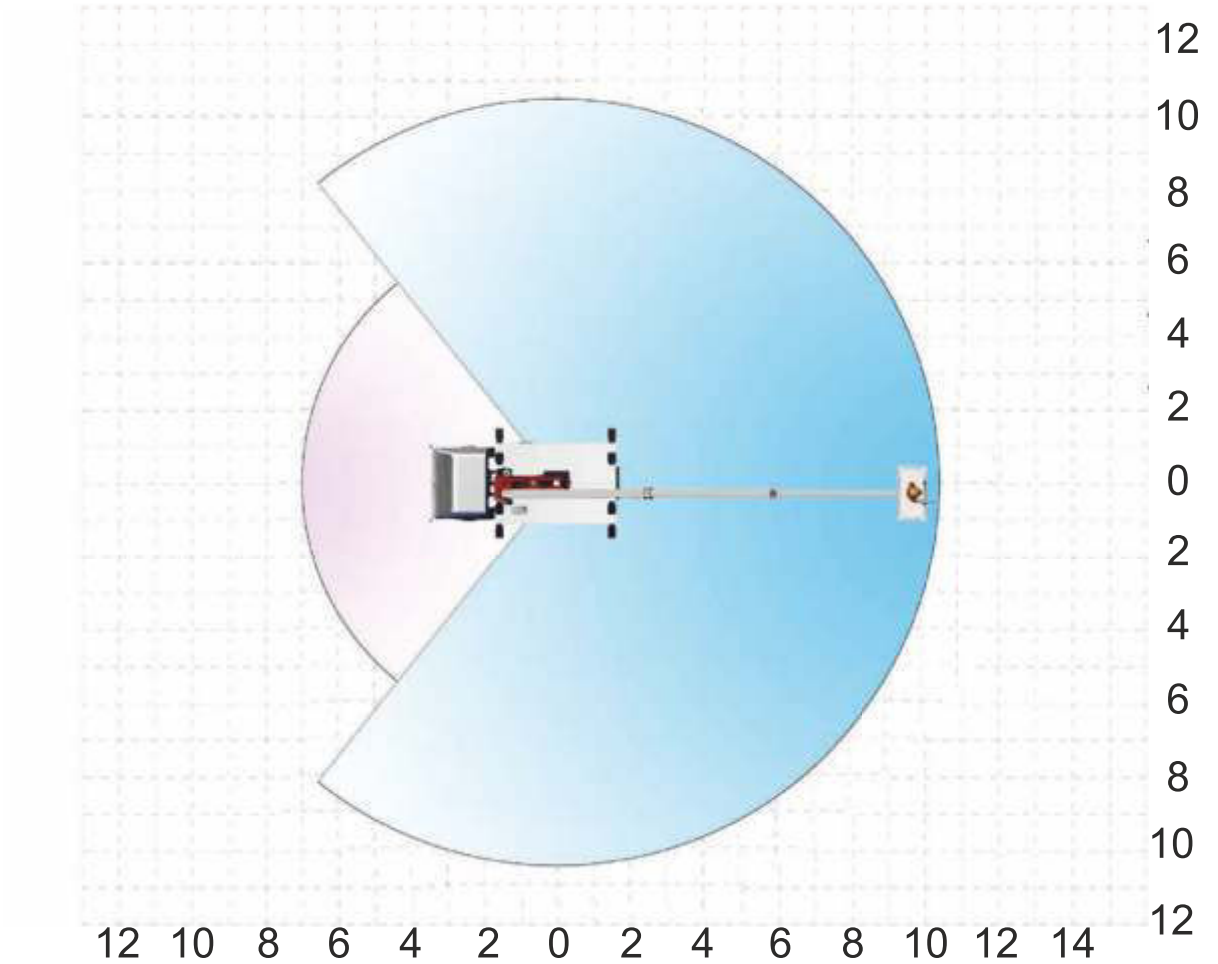
Slewing range	360 °
Slewing angle control	STANDARD
Slewing within mirror width	STANDARD

Working Range



Dimensions are in meter (m)

Working Range



Dimensions are in meter (m)

Technical Information



BOOM GROUP	
Upper boom of extention	2
Main boom angle	NA
Upper boom angle	-20°, +80°
Fly boom angle	85°
Length and angle control of boom	NA
It is not allowed to use outriggers when boom group is not on transfer position	STANDARD
All power guides and hydraulic and mechanical equipment internally routed and optimally protected against damage	STANDARD

STABILIZERS	
Two outriggers on each side	NA
Outrigger extention control	NA
Vertical jacking control	STANDARD
Maximum permissible inclination	1°
It is not allowed to use boom group when machine is not stabilized	STANDARD
All power guides and hydraulic and mechanical equipment internally routed and optimally protected against damage	STANDARD



CARRIER VEHICLE	
CARRIER MODEL	ASHOK LEYLAND (PARTNER 6-TYRE)
Total weight with platform	4.9 T*
Length in transportation	6790mm*
Height in transportation	2800mm*
Width in transportation	2100mm*
Angle of slope	14°*
HYDRAULIC AND ELECTRONIC SYSTEM	
Cabin on turntable	NA
Fully proportional hydraulic distrubutor	STANDARD
Emergency hand pump	STANDARD
Ramping on movement start and stop	STANDARD
Geometric control system	NA
Graphic display on cabin	NA
Engine start/stop in cabin	NA
Joystick control	STANDARD
Graphic display in the basket	NA