

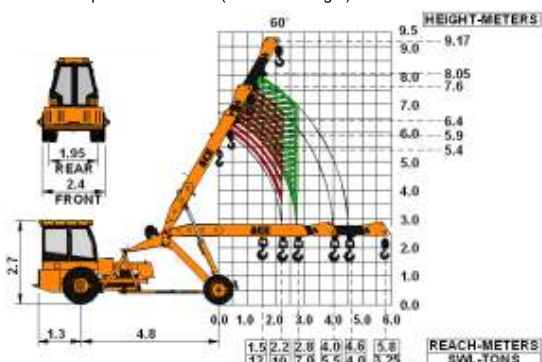
## Specifications

## 12XW

<b>LIFTING CAPACITY</b> (Free on wheels)	12 Tons
<b>ENGINE</b>	SIMPSON'S S433(I)-FI BSIII, 4 cylinder, watercooled diesel engine or suitable engine.
Rated Power	48 BHP (35.79 kw) at 2200 RPM.
<b>TRANSMISSION</b>	Heavy duty, sliding mesh with 6/8 forward and 2 reverse speeds with high low range selector.
Clutch	Heavy duty, single, dry friction, wire woven clutch plate with diaphragm type pressure plate.
Top Speed	28 KMPH without load.
<b>POWER STEERING</b>	Articulation through 2 hydraulic cylinders with 55° articulation on either side and turning radius of 6.5 Mtrs. (approx) on outer rear wheels.
<b>BRAKES</b>	Pneumatically assisted hydraulic brakes. Front and rear brakes are actuated through a single pedal.  Parking brake is Provided.
<b>HYDRAULIC SYSTEM</b>	<ul style="list-style-type: none"> <li>● Gear/Intra vane type main pump.</li> <li>● Four spools control valve.</li> <li>● Suction line has 100 mesh size strainer while return line is fitted with 25 micron full flow filter.</li> <li>● Two double acting lift cylinders, two double acting steering cylinders and one double acting extension cylinder.</li> </ul>

<b>ELECTRICAL SYSTEM</b>	12V. Negative earth with 35 Amp. alternator and 88 Amp hr. battery.
<b>TELESCOPIC BOOM</b>	Two part slotted boom with hydraulically operated extension.
Telescoping Time	12 Seconds.
<b>BOOM LUFFING</b>	
Range	-5° to + 60°
Time	21 Seconds.
<b>HOIST</b>	Winch is driven by hydraulic motor employing 4 falls of 13 mm dia rope and fitted with self adjusting hook block.
Hoist Speed	50 Mtrs./Min. (Line speed)
<b>TYRES</b>	
Front	11.00 x 20 - 16 PR (4 Nos.)
Rear	13.00 x 24 - 12 PR (2 Nos.)
<b>SAFETY</b>	<ul style="list-style-type: none"> <li>● Audio overload indication.</li> <li>● Hose failure protection.</li> <li>● Audio over hoisting indication.</li> <li>● Safety brakes on hoist.</li> <li>● Cylinder guards.</li> <li>● Self adjusting hook block.</li> </ul>
<b>FLUID CAPACITIES</b>	
Air Cleaner	0.75 Ltrs.
Engine	8.00 Ltrs.
Fuel Tank	50.00 Ltrs.
Hydraulic Tank	125.00 Ltrs.
Transmission	57.00 Ltrs.
<b>STANDARD EQUIPMENT</b>	<ul style="list-style-type: none"> <li>● ROPS fully enclosed wide view cabin with rotomould canopy.</li> <li>● Front tyre protector.</li> <li>● Front and rear work lights.</li> <li>● Reflectors &amp; rear view mirror.</li> <li>● Tool kit.</li> <li>● Gauges :- <ul style="list-style-type: none"> <li>a) Water temperature.</li> <li>b) Engine oil pressure.</li> <li>c) Ammeter.</li> <li>d) RPM meter cum hour recorder</li> </ul> </li> </ul>
<b>OPTIONAL EQUIPMENT</b>	<ul style="list-style-type: none"> <li>● Fly jib.</li> <li>● Lever type steering in lieu of Steering Wheel.</li> <li>● 3 part slotted boom with 2 hydraulic extensions.(height 11.25 mtrs. or 12.9mtrs.)</li> <li>● Spark arrester.</li> <li>● City type double driving cabin.</li> <li>● Over hoisting hydraulic cut off.</li> <li>● Safe load indicator.</li> </ul>
<b>OPERATING WEIGHT</b>	9250 kgs. (for 2 Part) 9800 kgs. (for 3 Part - 11.25 Mtrs.)

ACE 12 XW Model Crane fitted  
with 2 part slotted boom (9.17 mtrs. height)



NOTE: All above specifications are pertaining to 12XW model fitted with 2 part boom